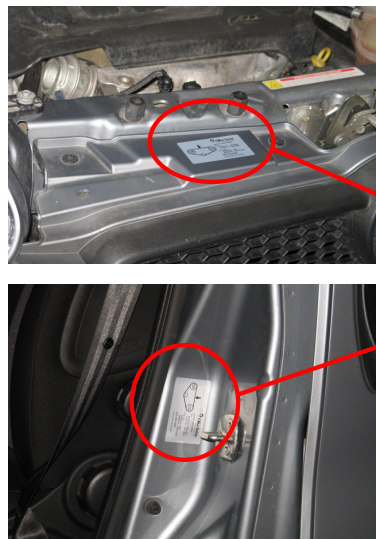


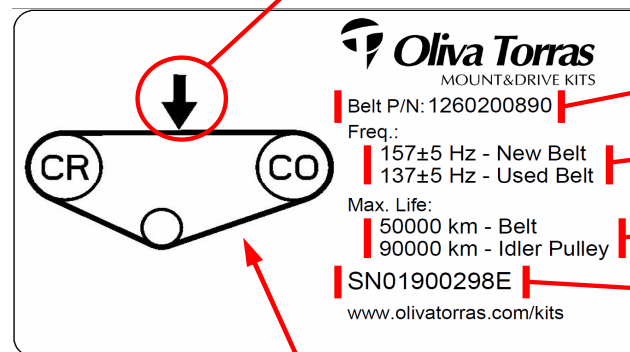
SB13030018 – Maintenance aid: Kit identification label

Features:

- From w12/2013 all kits manufactured are provided with an identification label
- Each belt supplied within the kit is identified with a label
- Place the label/s in a visible spot. Apply on a clean, preferable flat surface
- Sticker will stand grease, dust, rough weather conditions, in a wide temperature range of use



Label contents:



Belt tension measurement

Oliva Torras
MOUNT&DRIVE KITS

Belt P/N: 1260200890

Freq.:
157±5 Hz - New Belt
137±5 Hz - Used Belt

Max. Life:
50000 km - Belt
90000 km - Idler Pulley

SN01900298E

www.olivatorras.com/kits

Belt identification

Belt tension

Belt & Idler Pulley life

KIT IDENTIFICATION

Belt routing